



Tellus

Installation Guide

Tellus Kit Installation and Configuration Guide

Version 2.0
July 13, 2017

Millennium Group Inc.
16 Tech Circle
Natick, MA 01760
+1 866 455 5222

Purpose

The purpose of this document is to provide guidance to Millennium Authorized Dealers regarding the proper installation and configuration Tellus Kit

Disclaimer

The Millennium Group provides this publication "as is" without expressed or implied warranty. Millennium Group Inc. shall not be liable for errors or omissions in this document, nor for incidental or consequential damages in connection with the use of this guide.

Installers Note

Install all products according to relevant building codes

Copyright

© Millennium Group Inc. 2017. All rights reserved.

This publication is protected by copyright and all rights are reserved by the Millennium Group. It may not, in whole or in part be copied, photocopied, reproduced, translated or reduced to any electronic medium or machine-readable form without the prior consent of the Millennium Group.

Prior to Installation

Required Components

The following components are required to completed the installation of the Tellus Kit

- Tellus Kit powered on and connected to the network
- Information about the local network where the Tellus Kit will be installed
 - a. Network IP address
 - b. Gateway IP address (if necessary)
 - c. Assigned Static IP addresses for Tellus appliance and/or dedicated for NETDcd/ESCU IP addresses

Introduction

The Tellus Kit includes a NETDCCD-1 board, EDCD board, 2 Proximity readers, 10 proximity cards and a Windows 10 board preinstalled with the Ultra Lite software.

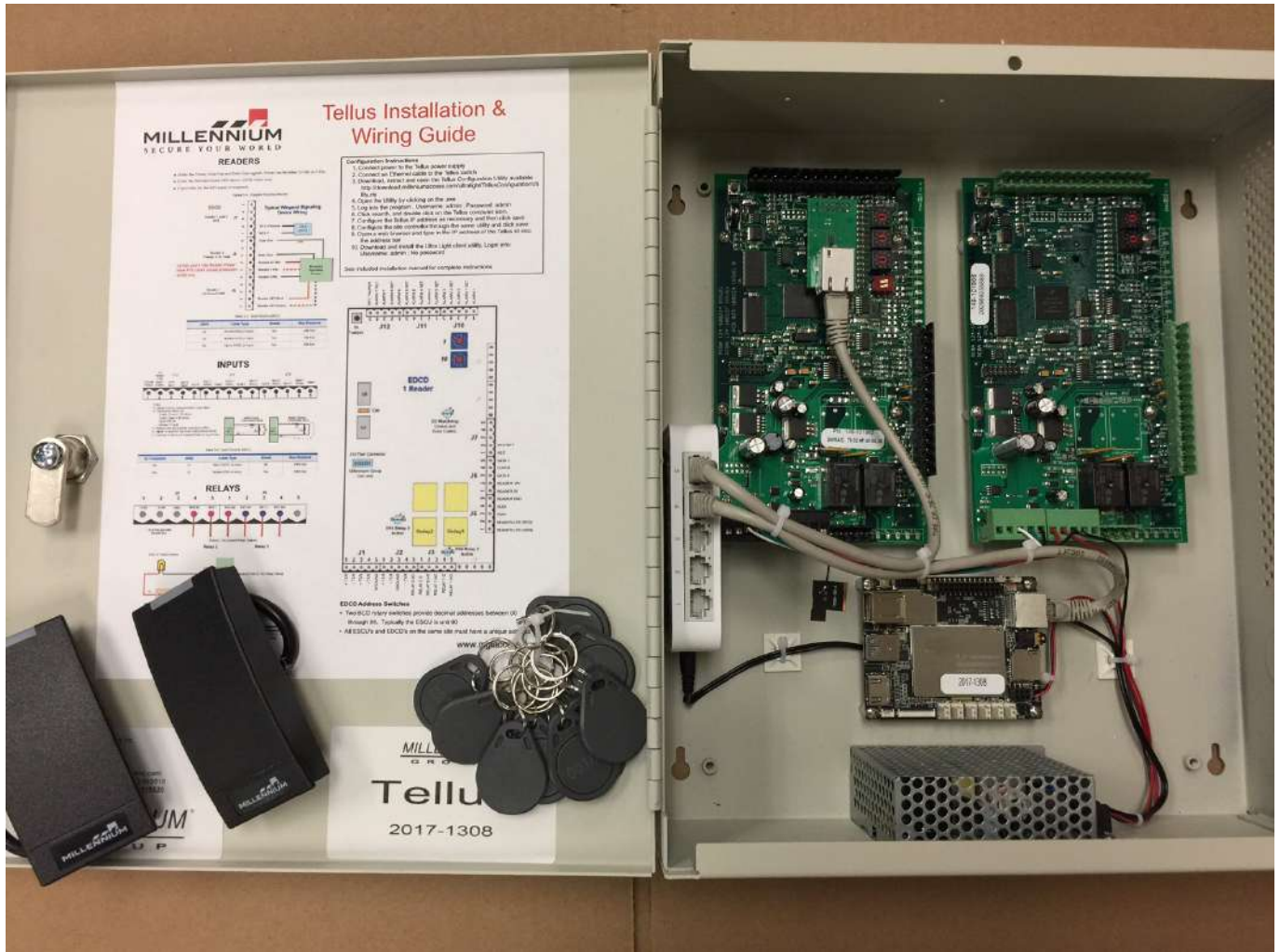


Figure 1. Tellus Kit

The NETDCD-1 board and appliance both contain RJ-45 Ethernet connectors.
The Default IP address for NetDCD-1 board 192.168.0.254.

Installation steps

1. Connect a 110 / 120 AC power source to the power supply
2. Connect the network cable to the network switch

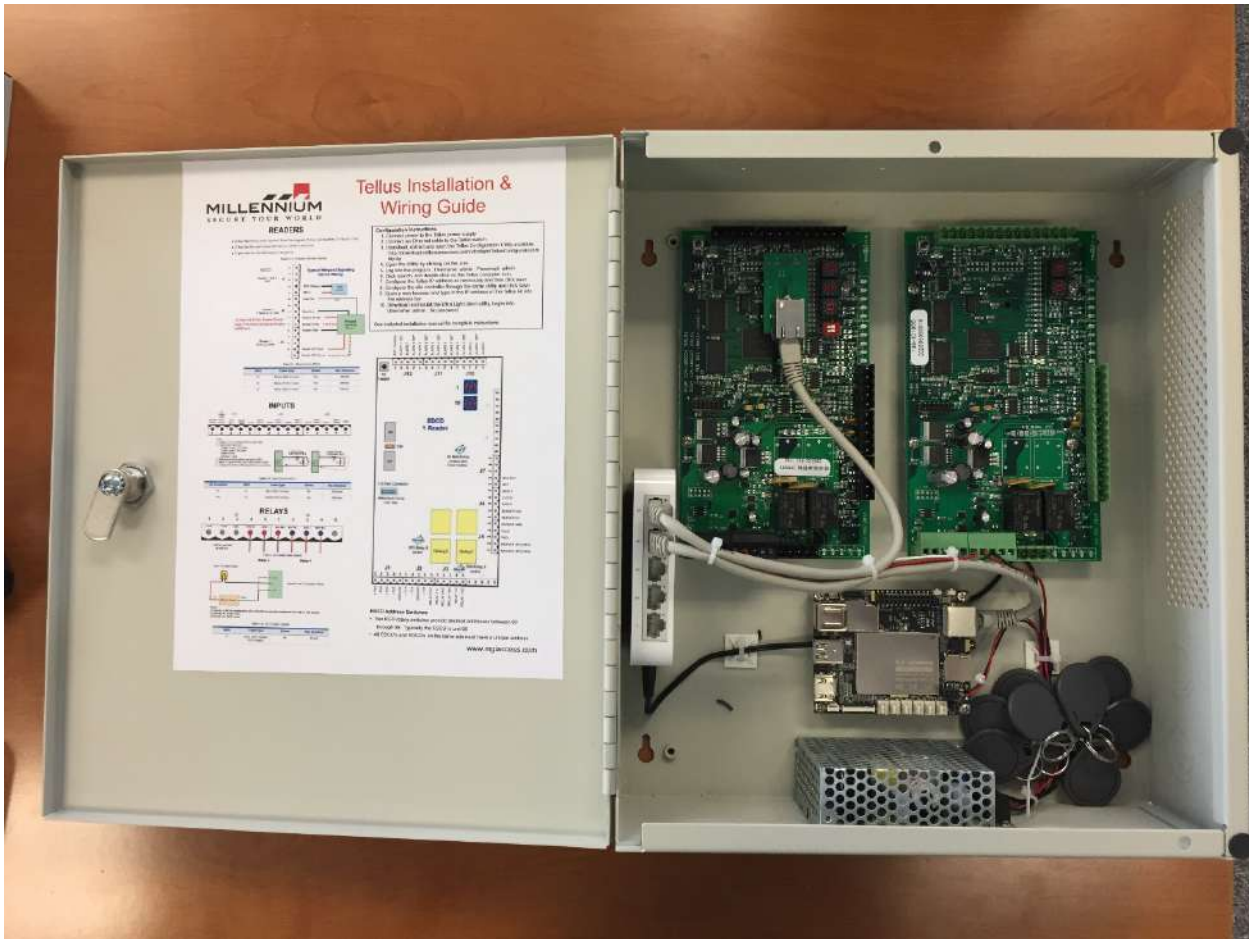


Figure 2. The Tellus package with the network switch

3. Press the "start" button on the appliance board

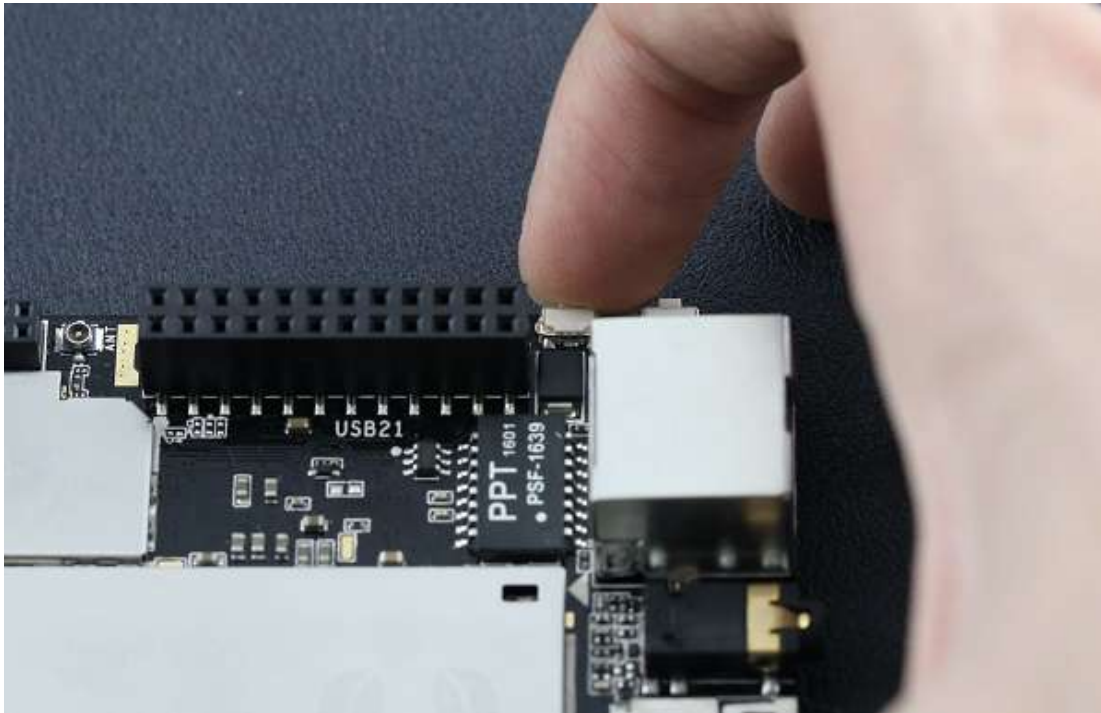


Figure 3. Appliance board with the button pressed

4. Download the TellusConfigurationUtility.zip file from the hyperlink below to the client computer <http://download.milleniумaccess.com/UltraLight> ; Unzip the archive then run the TellusConfigurationUtility.exe file. Enter the login/password (admin/admin). Select the Tellus appliance (computer icon) and configure the appliance network settings.

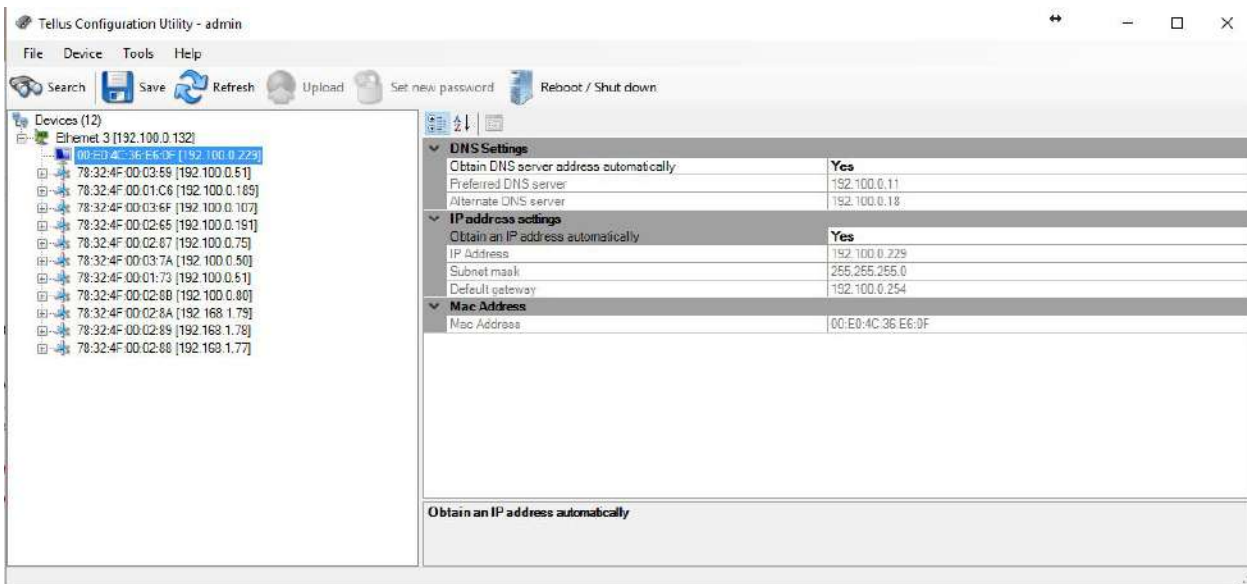


Figure 4. The Tellus Configuration Utility with the selected appliance board

- Select the connection mode, IP address and network settings for NETDCD-1 board (see Appendix 1 for details)

The Configuration Utility should automatically find the NETDCD-1 board.

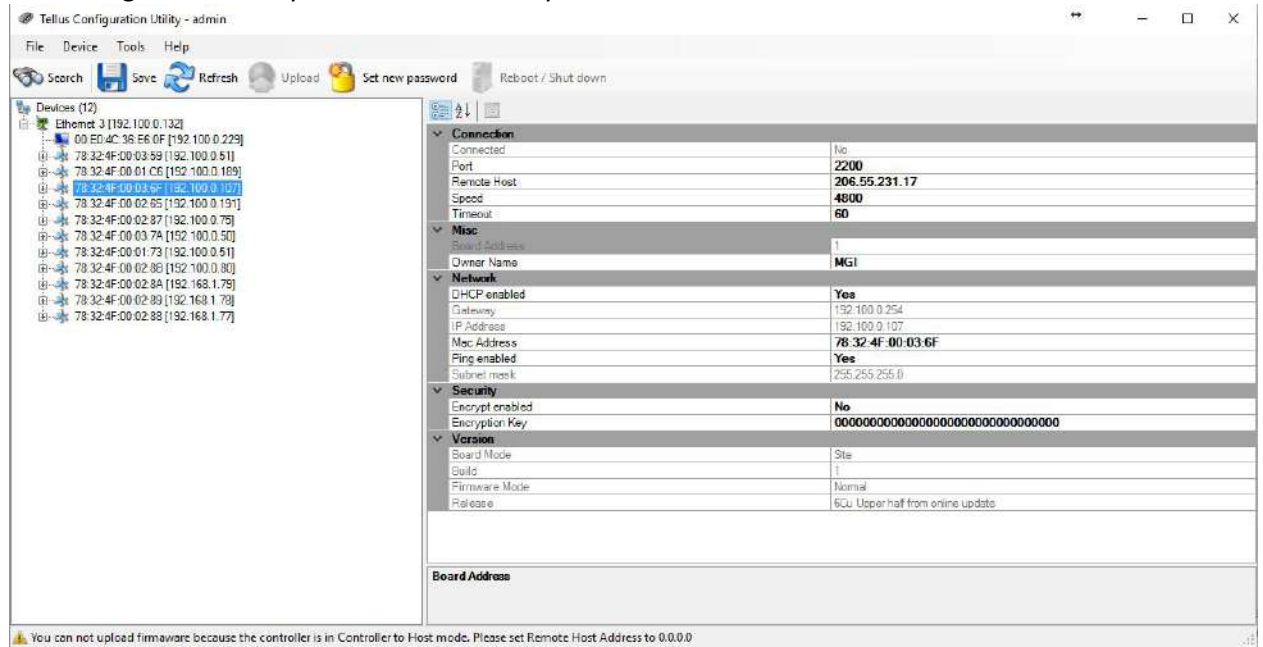


Figure 5. The Tellus Configuration Utility with the NETDCD board selected

Enter the correct values for Remote Host, IP address, Gateway and Subnet mask fields and press the save button.

- Connect to the appliance board from the client application/computer and install the Ultra Lite client. Open an internet browser and type the IP address of the appliance (IP address entered in step 4) & Click Enter.

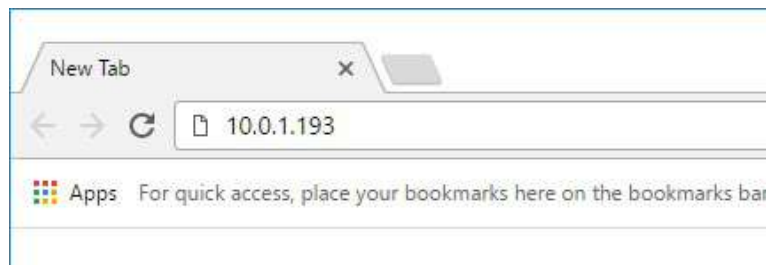


Figure 6. Appliance IP address in the browser URL field (example)

Browser will download Setup.exe file, Run this file.

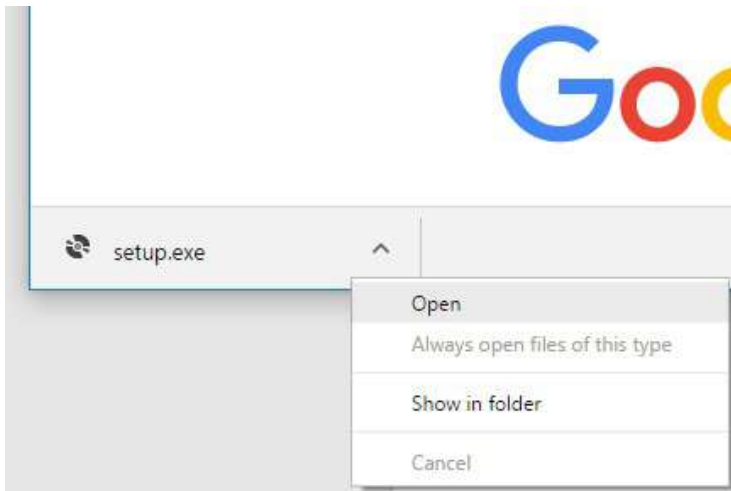


Figure 7. Opening the Setup.exe

Click Accept

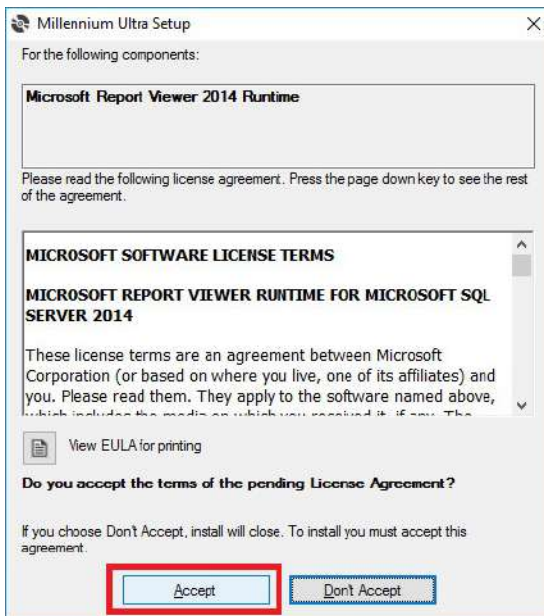


Figure 8. The confirmation page during Ultra Light client installation

Click Yes



Figure 9. The confirmation message during the Ultra Light client installation

It will download and install all necessary components for the client application.

7. Open the Ultra Light client to connect with Ultra Light server and configure NETDCD-1 and EDCD boards
After the installation, you will be prompted with a login screen.

Click on more options.

In the server URL string, type http://appliance IP address, where the appliance IP address is the address entered in step 4. In our example, it is 10.0.1.193. The server URL in our example should be:

http://10.0.1.193

Company Name: My Company

Login Name: Admin

No password.

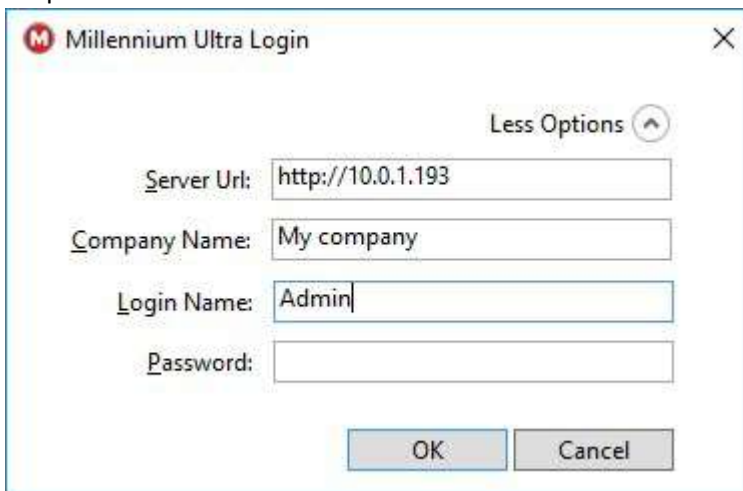


Figure 10. The Ultra Light client login page

You should see the Ultra main screen

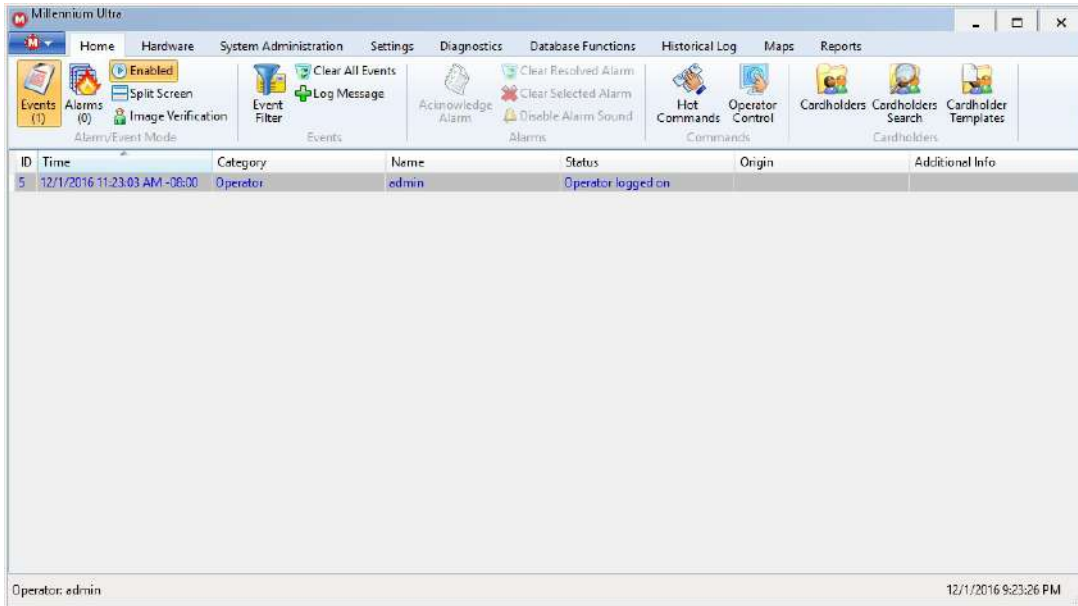


Figure 11. The Ultra Light client software

Go to Hardware -> Sites



Figure 12. How to select the site page in the Ultra Light client application

Enter the Site name, Description (if necessary), IP address (an IP address you have entered in SCU Configuration Utility for the NETDCD board). Click the Save button to save changes.

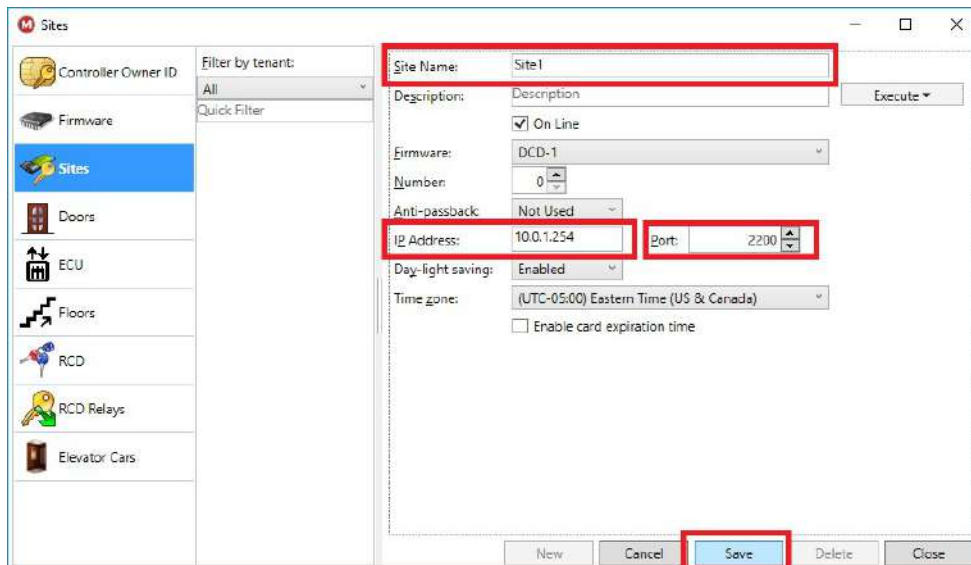


Figure 13. Site page in the Ultra Light client

8. Connect the boards to the readers and locks

Wire the reader to the NETDCD and EDCD board.



Figure 14. Reader connection

9. Configure the cards and cardholder access

More details about the NETDCD/ESCU/EDCD boards installation and configuration can be found in our online directory for installation guide. This document you can download from this location - <http://download.milleniumpaccess.com/UltraLight>

Appendix 1. How to the select connection mode and configure network configuration for NETDcd/ESCU boards

1. Configure the NETDcd/ESCU boards using the “Controller to host” connection mode

In most cases we recommend to select “Controller to host” connection mode. In this case you will need only one dedicated IP address for the Tellus appliance board, all other controllers can be configured with the “DHCP Enabled” regime, and will not require a dedicated IP address.

The Ultra Light software comes with Site 1 configured for this connection mode. See Figure 15.

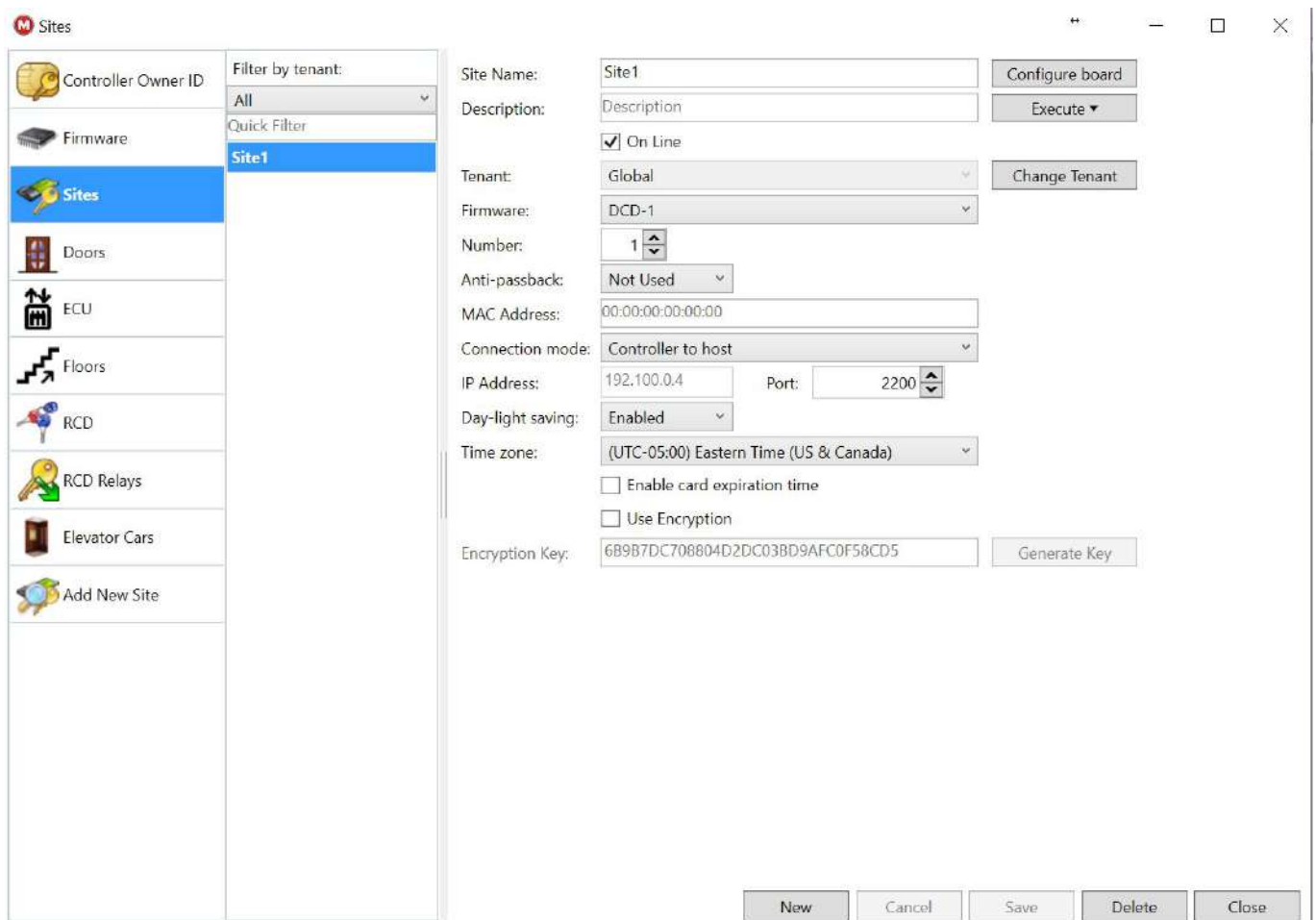


Figure 15. Site 1 is with preconfigured “Controller to host” connection mode

To configure the NETDcd/ESCU site to communicate to the Tellus appliance you need just enter in the “Remote Host page” with the correct IP address.

To configure the Tellus appliance IP address, select the appliance in TellusConfigurationUtility, change the DHCP enabled field to “No”, and fill in the following fields with the correct information:

1. IP address
2. Subnet mask
3. Gateway IP address
4. Preferred DNS server
5. Alternative DNS server

All information can be found by running the windows CMD command “ipconfig” utility with option “/all” on the client computer (the client computer should be at the same network with the Tellus Kit).

2. How to Configure NETDCD/ESCU boards with the “Host to controller” connection mode

To configure the NETDCD/ESCU boards using “Host to controller” connection mode, it is necessary to enter 0.0.0.0 for the “Remote Host” field and assign individual dedicated IP addresses to all NETDCD’s/ESCU’s; And the Tellus appliance via TellusConfigurationUtility.

Appendix 2. Tellus kit default credentials

Windows Login:

User: Ultra

Password: Marlok#16

TightVNC server password:

Password: @Ultra12

Sql Server (.\Ultra instance)

User: sa

Password: Ultra.2016