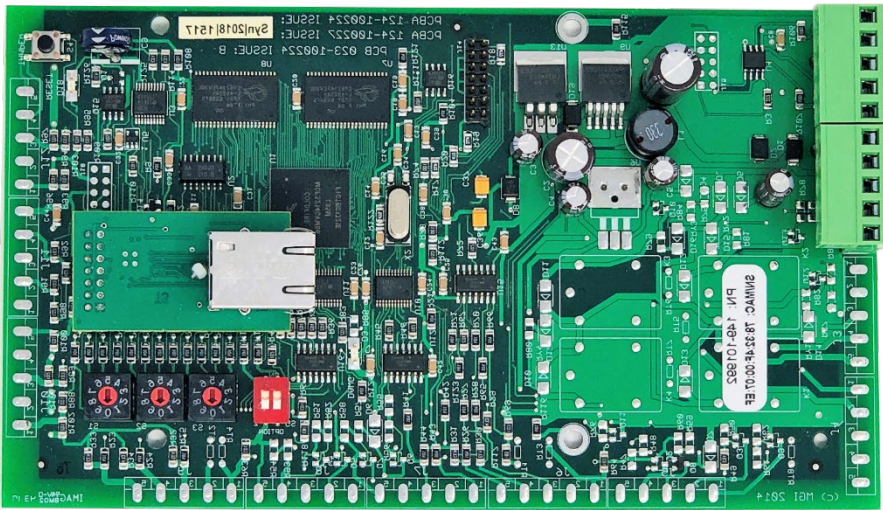


# ENHANCED SITE CONTROL UNIT (ESCU)



## APPLICATION

- ❑ The Enhanced Site Control Unit (ESCU) is a communications hub and memory buffer that sits between Millennium devices (DCD/EDCDs, ECUs, etc.), and the Millennium software running on a computer/server. Depending upon system operational needs and configuration, a single ESCU can support up to 99 DCD/EDCDs or 4 ECUs and 10ECDs.

## FEATURES

- ❑ All communications between the ESCU and the computer/server is IP which connects via an Ethernet socket on the ESCU. Communications between the ESCU and the Millennium devices is RS-485, on a twisted pair, shielded cable.
- ❑ When used with EDCDs, the communications speed on the RS-485 network can be as high as 38.4k.
- ❑ Depending upon the Millennium software chosen, up to 1000 fully supervised ESCUs can be connected to a single Computer/Server.



ESCU



149-101992

Enhanced Site Control Unit. Supervisory controller and ethernet interface with 7 alarm inputs and 1 reader port. Intended for use with Enhanced Door Control Devices (149-101966).



Enclosure

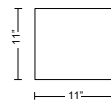


060-101025

Millennium Back Box package enclosure - with screw mounted cover.



Enclosure



041-100992

1 Board Surface Enclosure - Enclosure suitable for 1 Millennium circuit board, with camlock.

## SPECIFICATIONS

### Computer to ESCU Communications

- IP via the on board Ethernet connector and Cat5/Cat6 cable

### ESCU to Millennium Device Communications

- Two wire, multi-drop, RS-485 via shielded, twisted pair

### Transaction History Buffer

- 2000 event on board storage

### Alarm Event History Buffer

- 100 software selectable priority event (alarms, com fail, etc.) storage

- These events are stored on-board if the ESCU is off-line with the host software. Stored events are sent to the host software once communications are re-established

### Circuit Protection

- Input power is protected from reverse polarity, over-voltage and transient surges

### Operating Temperature

- 14° to 104°F (-10° to 40°C) less than 90% non-condensing humidity

### Power Requirements

- 9-14 VDC, supplied by the PS1 power supply; Current consumption is 50mA nominal, and 90mA maximum

### Cover Tamper Switch

- On-board integrated tamper switch

### Approvals and Listing

- UL 294 pending

### Dimensions

- 4.24" x 7.35" @ < 1lb, 10.8 x 18.7cm @ < 0.45Kg